

Wall Mount

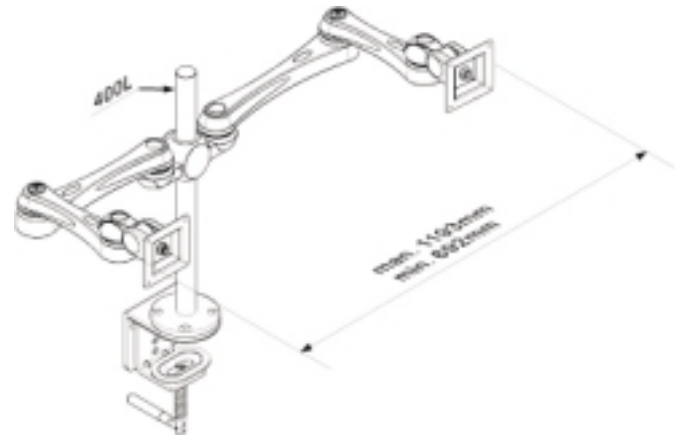


Clamp Mount

Desk Mount



Multiple monitor desk mounts



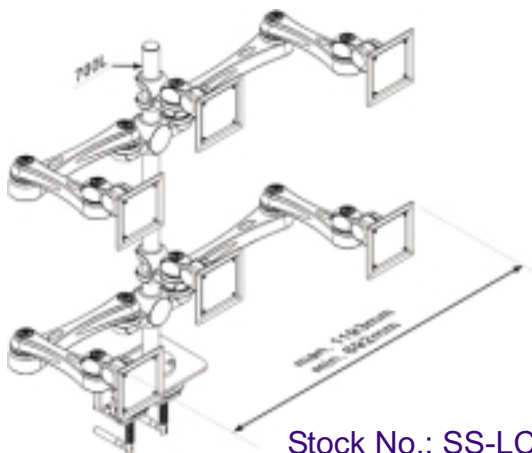
Stock No.: SS-LCDD-515S



Stock No.: SS-LCDD-516S



Stock No.: SS-LCDD-517S



Stock No.: SS-LCDD-518S

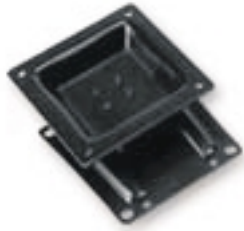


Characteristics:

- *Can be set up at small space.
- *Can be easily fixed on desk.
- *Can hold several monitors on one support pole-up to down, left to right or face to face.
- *Free to adjust the panel angle and height.
- *Hold stable by clamp.
- *Beautiful shape design fit for different working space.
- *Nice looking and save a lot of working space.
- *LCD Monitor can be easily fit into machine and highly vibration, with precision tolerance.
- *Increase the application of LCD Monitor in different sections.



Simple Econo Series Wall Mounts



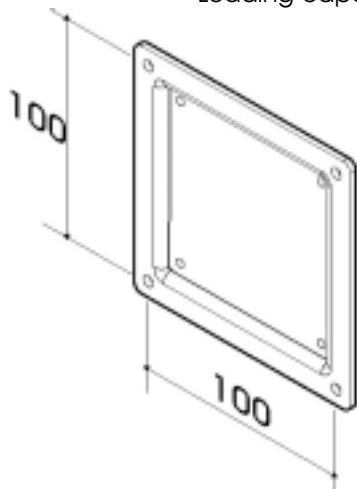
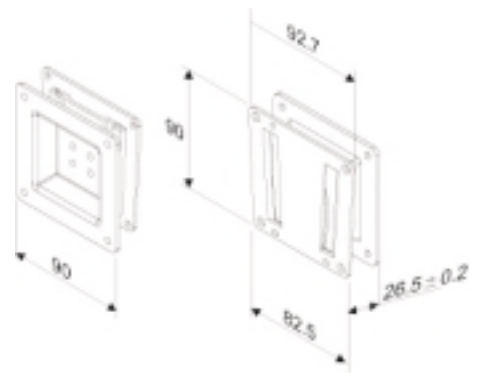
Stock No.: SS-LCDW-100B

Description:

Firmly mounts to solid wall.
Fixed type.

Specifications:

75 x 75 mm VESA.
100 x 100 mm VESA with supplied
adapter plate.
Loading capacity up to 20 kgs.



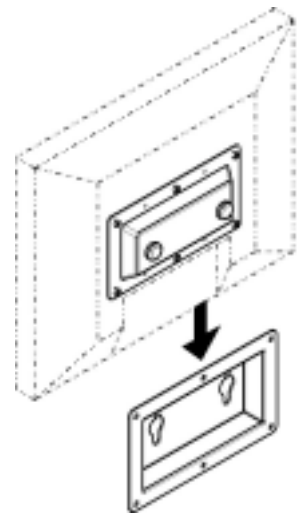
**100 x 100 mm
VESA interface.**



Stock No.: SS-LCDW-200S

Specifications:

Meet VESA Standard
(100 x 100mm & 100 x 200mm).
Weight capacity up to 35kgs.
Sits 4.45cm from the vertical surface.
Flush fixed type.



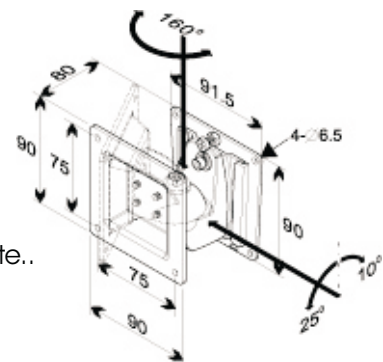
Stock No.: SS-LCDW-119B

Description:

Firmly mounts to solid wall.
Adjustable Swivel type.

Specifications:

- Firmly mounts to solid wall.
- Meets VESA mounting position: 75 x 75mm and 100 x 100 mm with supplies adapter plate..
- Loading capacity: up to 6kgs.
- Swivels to right and left up to 160 degrees.
- Constructed of hard wear plastic.
- Tilts upwards to 10 degrees and downwards to 25 degrees.



Articulated Wall Mounts

Stock No. SS-LCDW-553S

Specifications:

- * The arm can be extended to max. 191.5 mm from where it is mounted.
- * For saving space, the arm can fold up in min. 133 mm.
- * Meets VESA standard(75mm x 75mm and 100 x 100mm)
- * Its adjustable height (80mm ~ 500mm) is ergonomic and saves space.
- * High Capability - Loading capacity up to 12 kg.



Stock No. SS-LCDW-552S

Specifications:

- * The arm can be extended to max. 441.5 mm from where it is mounted.
- * For saving space, the arm can fold up in min. 133 mm.
- * Meets VESA standard(75mm x 75mm and 100 x 100mm)
- * Its adjustable height (80mm ~ 500mm) is ergonomic and saves space.
- * High Capability - Loading capacity up to 10 kg.



Stock No. SS-LCDW-551S

Specifications:

- * The arm can be extended to max. 621.5 mm from where it is mounted.
- * For saving space, the arm can fold up in min. 133 mm.
- * Its adjustable height (80mm ~ 500mm) is ergonomic and saves space.
- * High Capability - Loading capacity up to 8 kg.
- * Meets VESA standard(75mm x 75mm and 100 x 100mm)



Description:

The SOLID - Space Saving - Series LCD Monitor Arm is free to move in all space. Its ergonomic design allows your monitor to stop at any position you desire. Free to make up your own combinations in order to meet your needs of sales.

*Wall Mount Type

Characteristics:

- * It is made of high quality aluminum alloy.
- *The aluminum alloy material and silver frame give it an elegant and superior look, which beautifies your monitor and the working environment.
- * The sturdy main frame can still move smoothly even under full load.
- * High Flexibility - This Series is composed of seven different assembly components.
- * Additional extensions arms can be purchased separately if desired.
- * Cable organizer is included; cables are hidden under the arm.

Applications:

- 1.It goes well with partition boards and tracks in an office, or
- 2.Medicine table at a dentist, or
- 3.Medical equipment at a clinic or mobile cart, or
- 4.Industrial machinery or monitor system at a production line, or
- 5.Financial intuitions.



Exclusive Canadian Distributor: Vellone Communication Inc., 1555 Jean-Talon E., Montreal, Quebec, H2E 1S9
Tel.:(514) 729-9446 - Fax.: (514) 728-0172 - info@vellone.com - www.vellone.com/solid
www.solidsupports.com

Solid Series Desk Mounts



Stock No.:SS-LCDD-523S

Specifications:

- * The arm can be extended to max. 191.5 mm from where it is mounted.
- * For saving space, the arm can fold up in min. 133 mm.
- * Can adjust the height (from desk surface to VESA center) 80 ~ 404 mm.
- * Its adjustable height (80mm ~ 500mm) is ergonomic and saves space.
- * High Capability - Loading capacity up to 12kg.
- * Meets VESA standard(75mm x 75mm and 100 x 100mm)



Stock No.:SS-LCDD-522S

Specifications:

- * The arm can be extended to max. 441.5 mm from where it is mounted.
- * For saving space, the arm can fold up in min. 133 mm.
- * Can adjust the height (from desk surface to VESA center) 130 ~ 457 mm.
- * Its adjustable height (80mm ~ 500mm) is ergonomic and saves space.
- * High Capability - Loading capacity up to 10 kg.
- * Meets VESA standard(75mm x 75mm and 100 x 100mm)



Stock No.:SS-LCDD-521S

Specifications:

- * The arm can be extended to max. 621.5 mm from where it is mounted.
- * For saving space, the arm can fold up in min. 133 mm.
- * Can adjust the height (from desk surface to VESA center) 176 ~ 500 mm.
- * Its adjustable height (80mm ~ 500mm) is ergonomic and saves space.
- * High Capability - Loading capacity up to 8 kg.
- * Meets VESA standard(75mm x 75mm and 100 x 100mm)

Description:

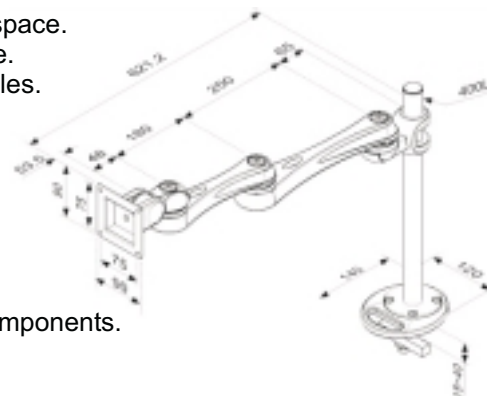
The Solid - Space Saving - Series LCD Monitor Arm is free to move in all space. Its ergonomic design allows your monitor to stop at any position you desire. Free to make up your own combinations in order to meet your needs of sales.
*Grommet Mount Type

Characteristics

- * It is made of high quality aluminum alloy.
- *The aluminum alloy material and silver frame give it an elegant and superior look, which beautifies your monitor and the working environment.
- * The sturdy main frame can still move smoothly even under full load.
- * High Flexibility - This Series is composed of seven different assembly components.
- * Additional extensions arms can be purchased separately if desired.
- * Cable organizer is included; cables are hidden under the arm.

Applications:

- 1.It goes well with partition boards and tracks in an office, or
- 2.Medicine table at a dentist, or
- 3.Medical equipment at a clinic or mobile cart, or
- 4.Industrial machinery or monitor system at a production line, or
- 5.Financial intuitions.



Solid Series Clamp Mounts



Stock No.: SS-LCDD-553S-CLAMP

Specifications:

- * The arm can be extended to max. 191.5 mm from where it is mounted.
- * For saving space, the arm can fold up in min. 133 mm.
- * Can adjust the height (from desk surface to VESA center) 80 ~ 404 mm.
- * Its adjustable height (80mm ~ 500mm) is ergonomic and saves space.
- * High Capability - Loading value up to 12 kg.
- * Meets VESA standard(75mm x 75mm and 100 x 100mm)



Stock No.: SS-LCDD-552-CLAMP

Specifications:

- * The arm can be extended to max. 441.5 mm from where it is mounted.
- * For saving space, the arm can fold up in min. 133 mm.
- * Can adjust the height (from desk surface to VESA center) 130 ~ 457 mm.
- * Its adjustable height (80mm ~ 500mm) is ergonomic and saves space.
- * High Capability - Loading value up to 10 kg.
- * Meets VESA standard(75mm x 75mm and 100 x 100mm)



Stock No.: SS-LCDD-551-CLAMP

Specifications:

- * The arm can be extended to max. 621.5 mm from where it is mounted.
- * For saving space, the arm can fold up in min. 133 mm.
- * Can adjust the height (from desk surface to VESA center) 176 ~ 500 mm.
- * Its adjustable height (80mm ~ 500mm) is ergonomic and saves space.
- * High Capability - Loading value up to 8 kg.
- * Meets VESA standard(75mm x 75mm and 100 x 100mm)

Description:

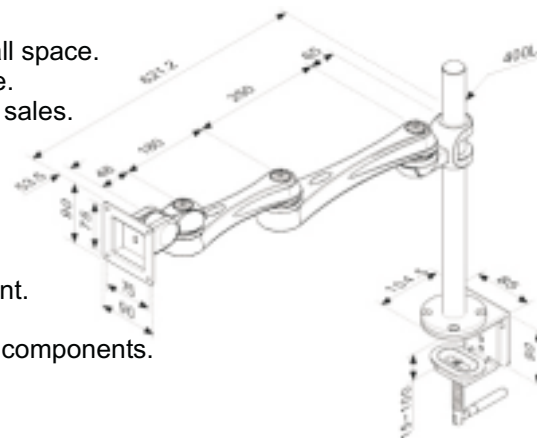
The Solid - Space Saving - Series LCD Monitor Arm is free to move in all space. Its delicate design allows your monitor to stop at any position you desire. Free to make up your own combinations in order to meet your needs of sales.
*Clamp Mount Type

Characteristics:

- * It is made of high quality aluminum alloy.
- *The aluminum alloy material and silver frame give it an elegant and superior look, which beautifies your monitor and the working environment.
- * The sturdy main frame can still move smoothly even under full load.
- * High Flexibility - This Series is composed of seven different assembly components.
- * Additional extensions arms can be purchased separately if desired.
- * Cable organizer is included; cables are hidden under the arm.

Applications:

- 1.It goes well with partition boards and tracks in an office, or
- 2.Medicine table at a dentist, or
- 3.Medical equipment at a clinic or mobile cart, or
- 4.Industrial machinery or monitor system at a production line, or
- 5.Financial intuitions.



Solid Series Medical Mounts



Stock No. SS-LCDW-105HA

Specifications:

- Wall Mounted
- Height adjustment can vary from plus 20 degrees to minus 60 degrees. Totally 845.6mm
- The total length of Arm is 172.55mm.
- Meet VESA Standard 75 x 75mm & 100mm x 100mm
- Weight Capacity up to 6kgs.



Stock No. SS-LCDC-107HA

Specifications:

- Ceiling Mounted
- Height adjustment can vary from plus 20 degrees to minus 60 degrees. Totally 845.6mm/24'5.3"
- The total length of Arm is 172.55mm".
- Meet VESA Standard 75 x 75mm & 100mm x 100mm
- Weight Capacity up to 6kgs.

Description:

*Built-in Gas Spring design is very simple to move for wherever you want it to be!

Characteristic:

- *Aluminum alloy and plastic cover make it simple and neat.
- *Special coating and antiseptic process conform medical requirements.
- *Hidden high-capacity cable manger makes performance under security.
- *Two models are available for ceiling mounting and wall mounting.

Applications:

*Hospital beds, operational platform, beauty salon, gym.



Solid Series LCD Pole Mounts



SS-LCDP-17N
35~42mm

Description:

- *Best solution to fix LCD monitor onto Pole and Pipe.
- *Great space saver to carry several monitors on a Pole or Pipe at the same time.

Characteristics:

- *The monitor can be fixed on Pole since the arm is clamped tightly against the Pole.
- *Some best applicable locations: Operational platform, any place with industrial equipments.



SS-LCDP-17W
42~52mm

Specifications:

Two models: the SS-LCDP-17N for pole diameter of 35~42mm or SS-LCDP-17W for pole diameters of 42~52mm, according to pole outside diameter.. According to VESA standard, two types of monitor can be mounted - 75 x75 mm and 100 x 100 mm with included mounting plate adapter.

